

How to generate different file formats

Different mediums—print, web and video—require different file formats. This guide describes how to generate appropriate file formats for these mediums by using Adobe Photoshop CS4.

When generating any image in Photoshop, it's important to remember that when you save an image, Photoshop saves the image as it appears onscreen. That is, if you have hidden some layers, they will not appear in the saved image.

Saving files for the web

For web pages, you will generally want to save photos in JPEG format. JPEG is used more than any other format for photos on web pages. (Other web formats include GIF—usually used for images with limited colors—and PNG—a less often used, but flexible format.)

JPEG is popular because it *compresses* well—that is, you can make files smaller without sacrificing quality. However, if you compress too much, file quality will suffer; the trick is to find the right balance between image quality and compression.

Photoshop makes this process easier through a command called Save For Web & Devices. You can use Save For Web & Devices to preview JPEGs with different compression settings before you save them.

Note: When you save a file for the web, it appears at its full pixel size. The document size does not affect how the image appears in a browser. For example, an image whose pixel size is 640 x 480 displays at that size in a browser. The document size affects only how the image prints.

To save a file as a JPEG:

1. Start Photoshop and open an image.
2. Choose File > Save For Web & Devices.
The Save For Web & Devices dialog box appears (**Figure 1**).
3. Click the 2-Up tab to display both the original and a preview of the file to be saved.

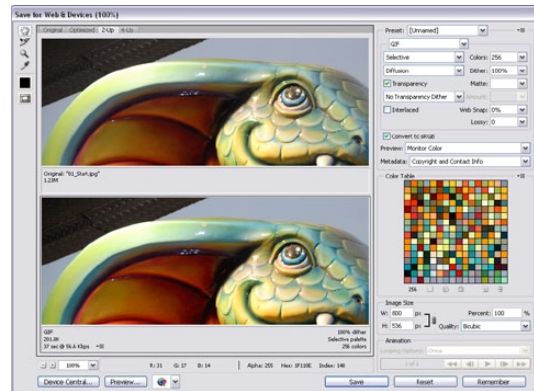


Figure 1 Save For Web & Devices dialog box

4. In the Optimized File Format pop-up menu, choose JPEG (**Figure 2**).
5. Adjust quality by using either the Compression Quality pop-up menu or the Quality slider (**Figure 2**).

As you change settings, observe how the lower (preview) photo appears.

6. When you are satisfied, click Save.

Clicking Save automatically saves a copy of the image as a JPEG with the settings you indicated. The original image is left unchanged. For working purposes, you may want to incorporate some of the settings into the filename, such as “banner_high.jpg” for an image saved as a high-quality JPEG.

After you save, the original file stays open in Photoshop.

Note: If the original image is also a JPEG (many digital cameras use JPEG as a format), you need to save the copy in a different location from the original (or give it a different name) to avoid confusion.

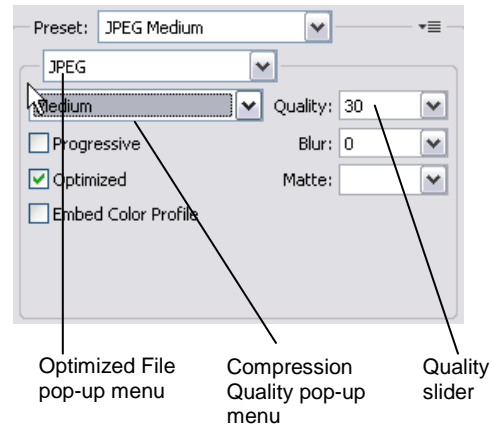


Figure 2 Save for web settings

Generating files for print

Generating files for print use is different from saving images for the web: you use an uncompressed file format and you must be sure the file is at a high enough resolution (preferably 300 ppi) before you save it. It is always good to import the image into Photoshop at the highest possible resolution to give more flexibility in the kinds of images you can generate.

Note: You can print to a printer directly from any computer running Photoshop. The options described here are for sending an image to a printer, to another computer to be printed, or to another application.

Generating files for print involves three steps:

1. Setting the image resolution to 300 ppi.
2. Converting the image to CMYK (if the image is going to an offset print vendor).
3. Generating a print-friendly (compression-free or lossless) format, such as TIFF.

Setting resolution to 300 ppi

1. Open an image in Photoshop.
2. Choose Image > Image Size.

The Image Size dialog box appears (**Figure 3**).

3. Make sure the Resample Image option is *not* selected.

When you leave this option unselected, you ensure that you're only changing the image's resolution, not removing or adding pixels.

4. Enter **300** in the Resolution text box.

Make sure pixels/inch is selected as the units for Resolution.

5. Click OK.

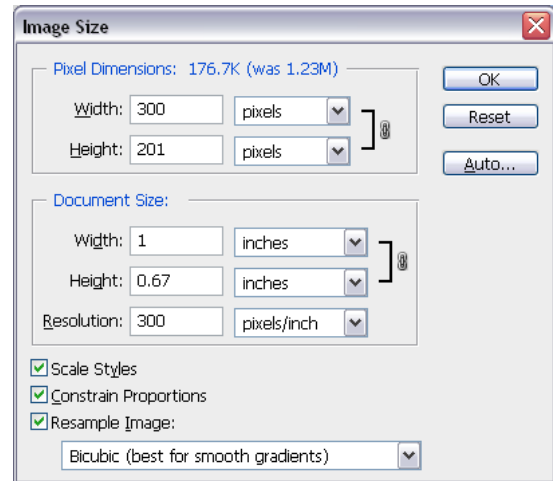


Figure 3 Image Size dialog box

To preview an image at the size it will appear when printed, choose View > Print Size (you may need to first select View > Show All Menu Items).

Converting images to CMYK

Computers use combinations of red, green, and blue (RGB) to display photos. Offset printing presses print full-color photos, using cyan (blue), magenta (red), yellow, and black. This is known as CMYK printing. If you are printing to an inkjet printer, you can leave the image in RGB mode, but if you are sending the image to an offset print vendor, you need to convert the image to CMYK.

To view how the image will appear in CMYK, choose View > Proof Setup > Working CMYK. (For some images, you may not observe any difference at all.) This preview is called a *soft proof*.

Note: Soft proofs are approximations. What you see onscreen depends on the quality and settings of your monitor as well as the lighting conditions of your work environment. You may observe different results when you actually print. Nevertheless, soft proofs can be useful.

Photoshop also lets you preview how the image will appear on a range of different printers, including most Epson models and offset printing. To view these, choose View > Proof Setup > Custom.

To convert the image to CMYK:

1. Save a copy of the image.
2. Choose Image > Mode > CMYK Color.
3. If the image has layers, Photoshop asks whether you wish to flatten these. Click Yes.

(Because you saved a copy of the file, you can open the saved copy to recover the layers.)

Generating TIFFs

After you convert the image to CMYK and make sure it is at the correct resolution, you can save it in a print-friendly format (a format with no compression, known as a lossless format). In this exercise, you will choose the TIFF format.

Note: Although TIFF is the most common lossless image format, you can also use EPS or an Adobe PDF.

1. Choose File > Save As.

The Save As dialog box appears (**Figure 4**).

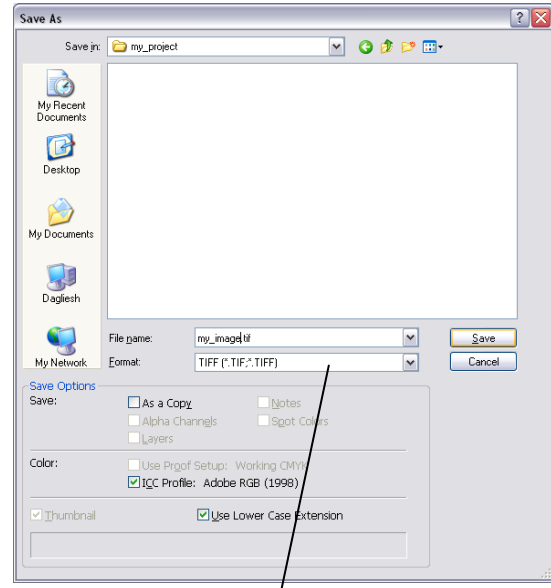
2. In the Format box, choose TIFF (*.TIF, *.TIFF).
3. Click Save.

The TIFF Options dialog box appears (**Figure 5**).

4. Because the image is going to a printer, you do not need to compress it. Leave Compression set to None. Leave Pixel Order set to Interleaved.

Note: In practice, TIFF files are seldom compressed.

5. Set Byte Order to your operating system (Windows or Mac OS).
6. Because the image is going to a printer, you also don't need to save the layers. Make sure Discard Layers And Save A Copy is selected. This option flattens the layers in the image.
7. Click OK.



Format pop-up menu

Figure 4 Save As dialog box

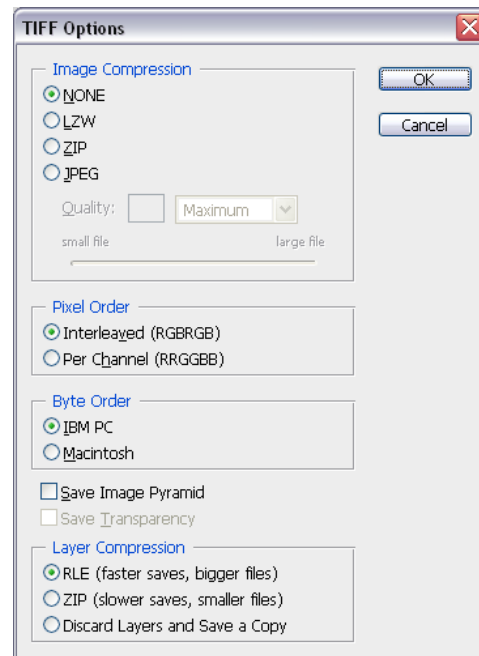


Figure 5 TIFF Options dialog box

Printing images and saving print dialog settings

There may be occasions where you want to print a copy of your image to a local printer. Photoshop provides many printing options, including the following printing commands:

Page Setup Displays options specific to your printer, printer drivers, and operating system.

Print Displays the Print dialog box, where you can preview the print job and select the printer, number of copies, output options, and color management options.

Print One Copy Prints one copy of a file without displaying a dialog box.

Once you have established a preferred combination of format and color management options, you can save the print dialog settings as a preset for use later.

To set Photoshop print options and print:

1. Choose File > Print.

The Print dialog box appears (**Figure 5**).

2. Do one or more of the following:

- Use the Printers menu to select a printer.
- Set the paper orientation to portrait or landscape.
- Select the number of copies to print.
- Adjust the position and scale of the image in relation to the selected paper size and orientation.
- Set Output and Color Management options from the pop up menu.

3. Do one or more of the following:

- To print the image, click Print.
- To close the dialog box without saving the options, click Cancel.
- To preserve the options and close the dialog box, click Done.
- To print one copy of the image, hold down Alt (Windows) or Option (Mac OS), and click Print One.
- To reset the print options, hold down Alt (Windows) or Option (Mac OS), and click Reset.
- To save the print options without closing the dialog box, hold down Alt (Windows) or Option (Mac OS), and click Remember.

Note: If you get a warning that your image is larger than the printable area of the paper, click Cancel, choose File > Print, and select the Scale To Fit Media box. To make changes to your paper size and layout, click Page Setup, and attempt to print the file again.

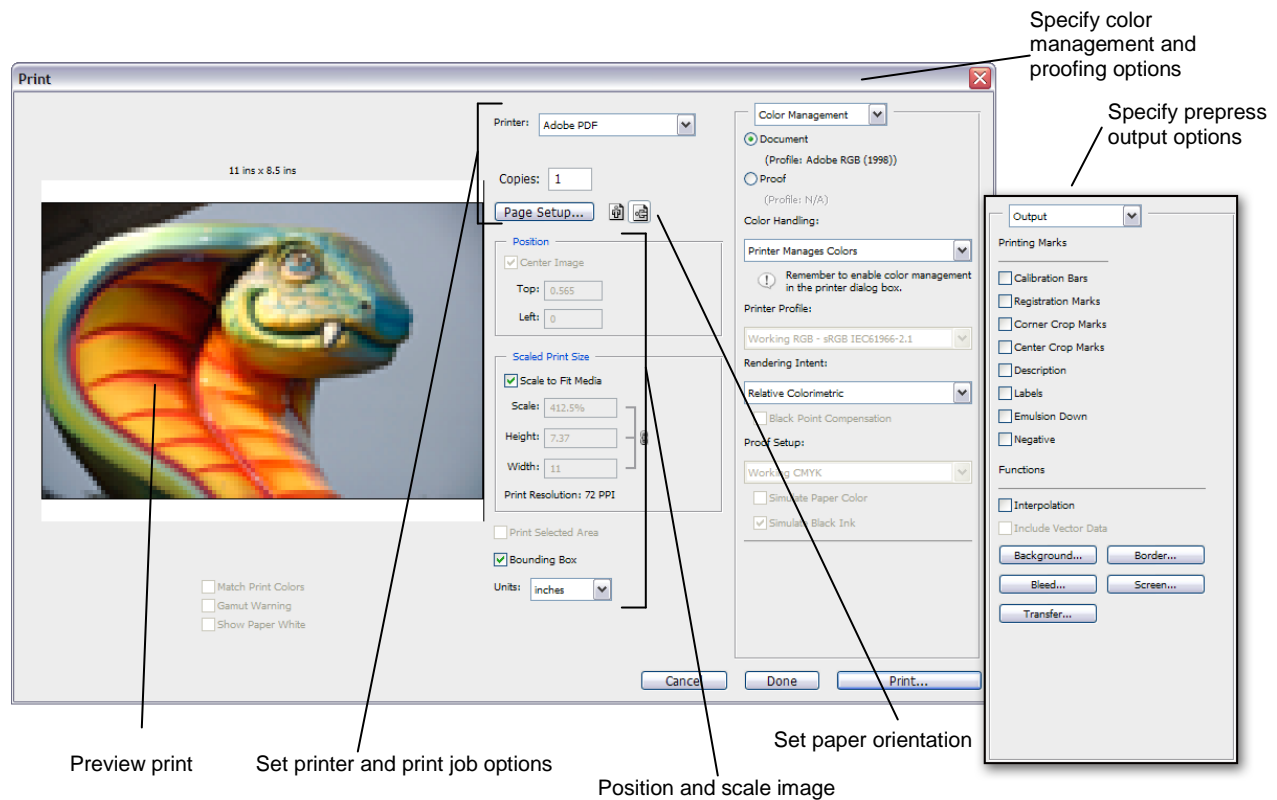


Figure 5 Print dialog box

Creating images for video

Photoshop can create images of various aspect ratios so that they appear properly on devices such as video monitors. You can select a specific video option (using the New dialog box) to compensate for scaling when the final image is incorporated into video.

Safe zones

The Film & Video preset also creates a document with nonprinting guides that delineate the action-safe and title-safe areas of the image (**Figure 6**). Using the options in the Size menu, you can produce images for specific video systems—NTSC, PAL, or HDTV.

Safe zones are useful when you edit for broadcast and videotape. Most consumer TV sets use a process called overscan, which cuts off a portion of the outer edges of the picture, allowing the center of the picture to be enlarged. The amount of overscan is not consistent across TVs. To ensure that everything fits within the area that most TVs display, keep text within the title-safe margins, and all other important elements within the action-safe margins.

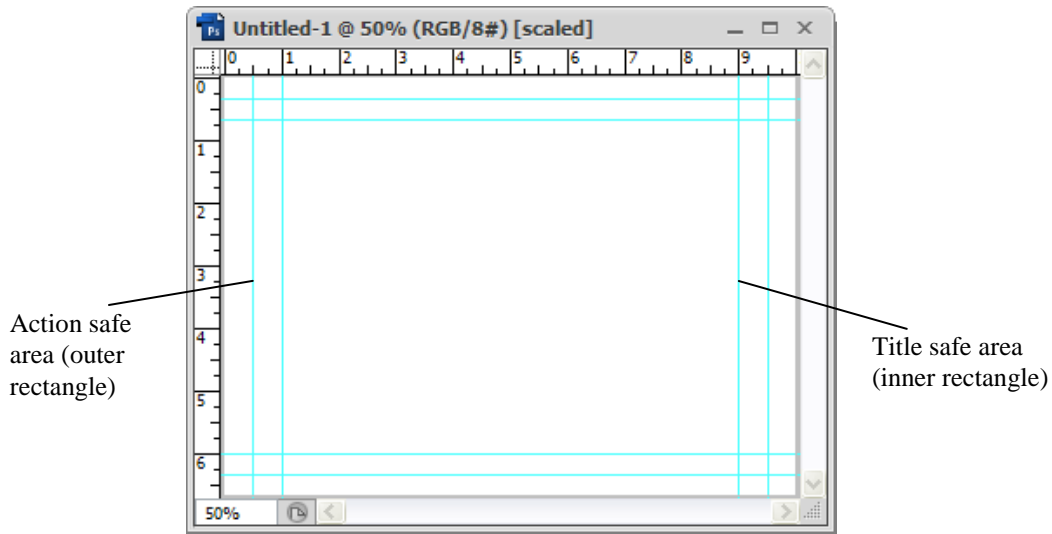


Figure 6 Video preset file size guides

To create an image for use in video

1. Create a new document.
The New document dialog box appears (Figure 7).
2. From the Preset menu in the New dialog box, choose the Film & Video preset.
3. Choose the size that is appropriate for the video system on which the image will be shown. In this case, the NTSC DV option is selected (Figure 8).
4. Click Advanced to specify a color profile and specific pixel aspect ratio.

Important: By default, nonsquare pixel documents open with Pixel Aspect Ratio Correction enabled. This setting scales the image so it appears as it would on the nonsquare-pixel output device (usually a video monitor).

5. Click OK to close the New document dialog box
6. Click OK to accept the “Pixel aspect ratio correction is for preview purposes only. Turn it off for maximum image quality” message.

The new document opens (Figure 6).

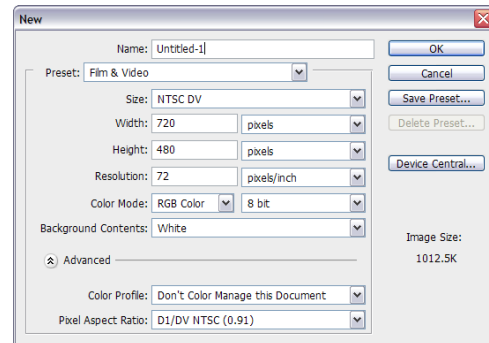


Figure 7 New document dialog box

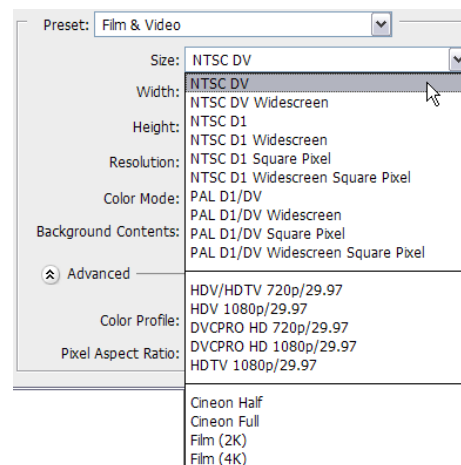


Figure 8 Film and video size preset options

7. To view the image as it would appear on a computer monitor (square pixel), choose View > Pixel Aspect Ratio Correction (**Figure 9**).

Note: You can simultaneously view an image with the Pixel Aspect Ratio Correction turned on and off. With the nonsquare pixel image open and Pixel Aspect Ratio Correction enabled, choose Window > Arrange > New Window For [name of document]. With the new window active, choose View > Pixel Aspect Ratio Correction to turn off the correction.

8. If you have a display device, such as a video monitor, connected to your computer via FireWire, you can preview the document on the device:
 - To set output options before previewing the image, choose File > Export > Video Preview.
 - To view the image without setting output options, choose File > Export > Send Video Preview To Device.

Note: When creating images for video, you can load a set of video actions (included with Photoshop) that automate certain tasks—such as scaling images to fit video pixel dimensions and setting the pixel aspect ratio.

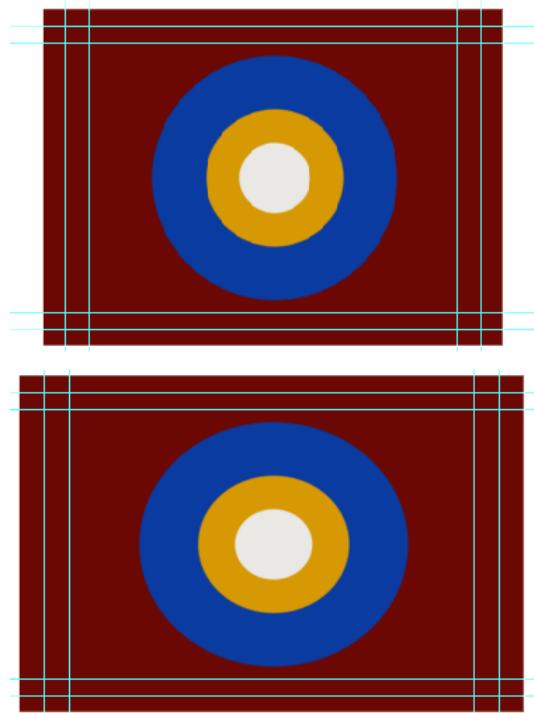


Figure 9 Circle in NTSC DV (720 x 480 pixels) document viewed on computer (square pixel) monitor with Pixel Aspect Ratio Correction turned on (top) and Pixel Aspect Ratio Correction turned off (bottom)